



## IN-LINE PLASTIC PELLET PRODUCTION MONITORING, AND SORTING

Cost-effective solutions for inspecting every produced pellet in real-time

### Allowing the user to:

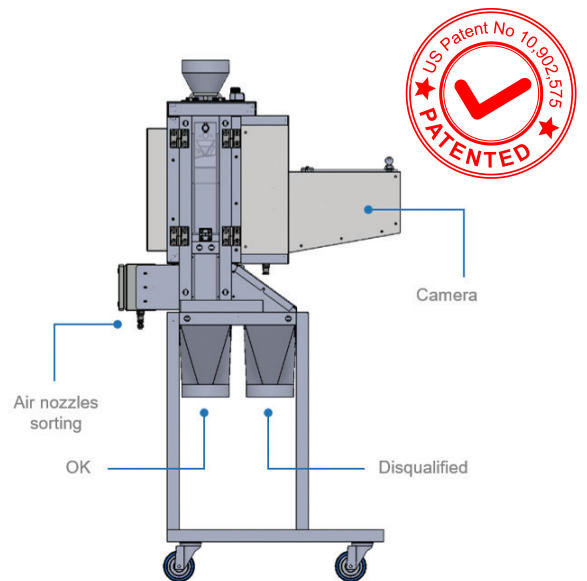
Continuously monitor all produced pellets' quality.

Implement automated alarms for any process deviation impacting quality.

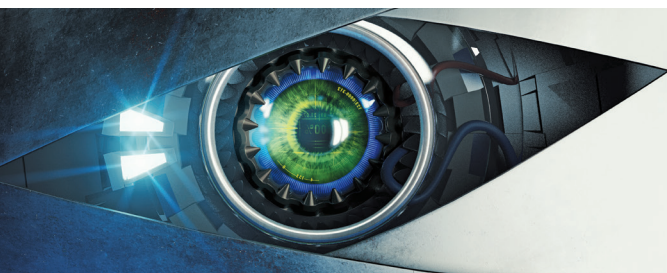
Integrate automatic rejection systems to remove substandard pellets from the production line.

Automatically divert materials with color discrepancies to a designated "B" class outlet.

Trigger automatic shut-off of additive feed when quality falls below threshold.



- Detection of different Impurities in the material
- Standard configuration - 150 microns resolution for both mono and color cameras
- Configuration for dark PCR - 80 micron resolution for color cameras, 150 resolution for the mono camera
- 3 selectable models provide throughput coverage from 1 to 9 Tons/Hour
- Two Sorting Options (can be combined together):
  - Diverter valve
  - Air blow nozzles unit



**inspect**tech

# What we do

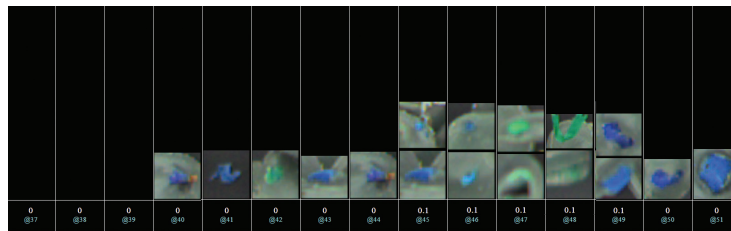
We assist recyclers in assuring constant quality and color of the manufactured material.

# How we do it

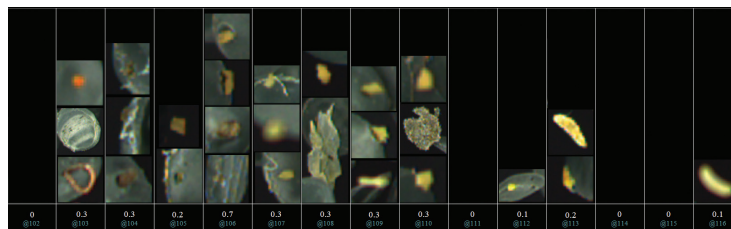
## Detection Capabilities

- Impurities in the material
- Median pellet size variation and pellet size distribution
- “Tails” caused by improper cutting
- Angel hair, fines, and streamers caused by the transfer system
- Color variations - using color cameras and/or an inline spectrometer
- Cross-contamination

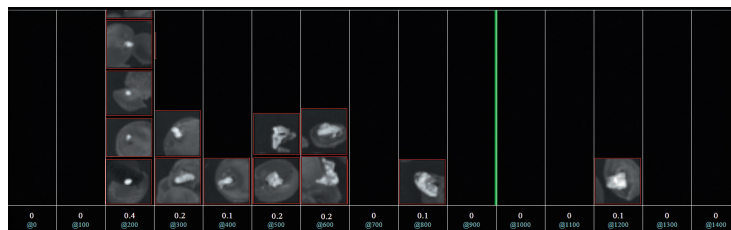
# Our Results



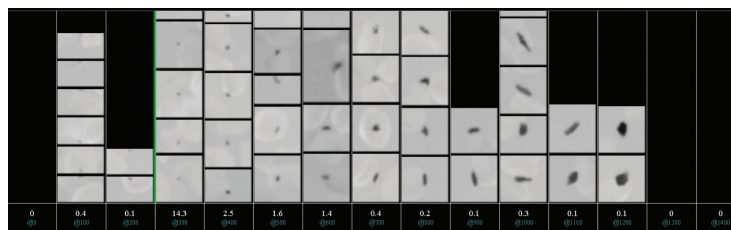
- Contaminations of different colors using color camera



- Silicon / wood



- Bright contaminations (e.g Aluminum) using a monochromatic camera



- Black contaminations on bright material

# Your Control



- Track your production status at all time
- Activate an alarm/divert material when quality drops

